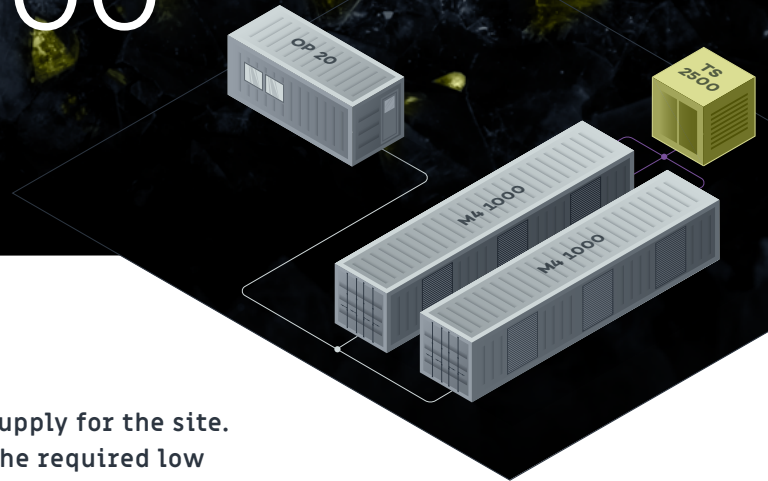


# ANOV TS 2500

Transformer Station



This transformer station ensures a stable power supply for the site. It converts the voltage from the power grid into the required low voltage. The unit is delivered ready for connection in a station building.

## FEATURES

### ENDURING

The transformer station has been designed for 24/7 continuous operation over 50 years. It does not need to be serviced nor kept in an air-conditioned environment during this time. Furthermore, the oil-free cast resin transformer is environmentally friendly.

- \_ Maintenance-free continuous operation
- \_ Resistant in all climate zones
- \_ Made in Germany

### READY FOR CONNECTION

The station is already fully assembled upon delivery. Only the cables need to be connected before it can be powered on. Neither roofing nor a foundation are required due to the station building.

- \_ Compact and transportable
- \_ Faster setup and quick startup
- \_ Station building made of reinforced concrete

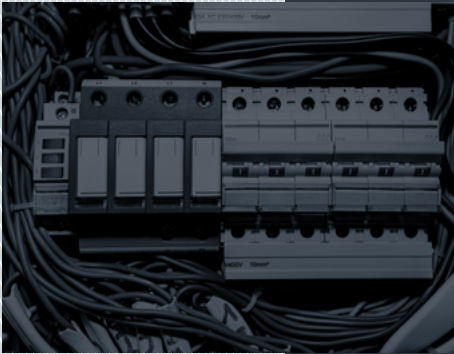
### SPECIALIZED

The transformer is optimized for the special requirements for grid quality when used for cryptomining. Furthermore, remote monitoring plays a major role in mining. The transformer station is connected to the operation container's network.

- \_ Converter transformer for maximum grid quality.
- \_ Configurable for each use scenario
- \_ Real-time monitoring of all operational data
- \_ Precise recording of consumption data
- \_ Measure and evaluate the voltage quality

# \\ SPECIFICATIONS

Type	cast resin converter transformer
Capacity	2 x M4 1000 or 4x M5 500
Power output	2.5 MVA
Medium voltage	10 kV or 20 kV
Low voltage	400 V
Operating temperature	-40°C to 40°C
Dimensions of the station building	2.70 m wide, 3.00 m high, 4.20 m long
Total weight	20 t



„Our transformers are specially tailored to the requirements of a mining site and guarantee top-notch reliability with maximum grid quality.“

Sascha Seewald [ Head of Product ] ANOV

# \\ MEET OUR PARTNERS



BITMAIN

EBANG



# \\ CONTACT

+49 351 271842 00

info@anov.tech

 Made in Germany